

WAHL
HAIR PRODUCTS

FIELD GUIDE
to taming your
JUNKLE





ADVENTURE *Awaits*

So, you've decided to venture into the wilderness that is your "jungle." Let this be your guide to safely navigate the uneven and sometimes dangerous terrain that lies ahead—or rather, down below.

Jungle taming tool of choice: **WAHL MANSCAPER**



Wrap-around safety guard with rounded edges
eliminates nicks and cuts

Safe-touch ballpoint stainless steel blades stay sharp for years, never snag and are gentle on the skin

Waterproof
for impending monsoons

Adjustable dial
offers 20 different safe and secure cutting lengths

Fuel Gauge so you always know how long you have

Lithium-ion Technology
runs a really, really long time

Never GO INTO THE JUNGLE WITHOUT THE RIGHT TOOLS

Compass, headlamp, good footwear...
These are important, but no man should
enter his jungle without the Wahl Manscaper.
Its integrated protection system prevents
injuries and easily cuts through heavy bush.



**WHEN IN DOUBT,
*Head South***

You may become lost. No need to panic. The Wahl Manscaper is specially designed for southern expeditions. Simply take your compass and head toward the lower hemisphere. Wahl's patented stainless-steel blades will reveal the treasure that lies below.

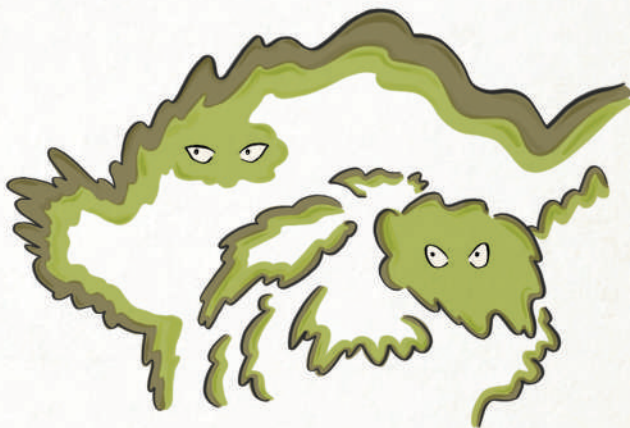


TIP #3

Avoid

THINGS THAT BITE

There are many dangers in the jungle and using the wrong tool could increase your chance of being bitten. Instead, err on the side of safety by keeping your Wahl Manscaper close. How close? You decide. The trimmer's adjustable guard with rounded edges couldn't be more tame.



Don't

EXPLORE AFTER DARK

Your Wahl Manscaper is outfitted with lithium-ion technology that runs an industry-best 100 hours. But just because you could make your way through the jungle well into the night doesn't mean you should.





For more information about the Wahl Manscaper, or for grooming tips and tools, visit WahlUSA.com, scan the below QR code or follow @WahlGrooming on



MEDIA CONTACT:

Robyn Nowak; rnowak@hoffmanyork.com; (414) 225-9520